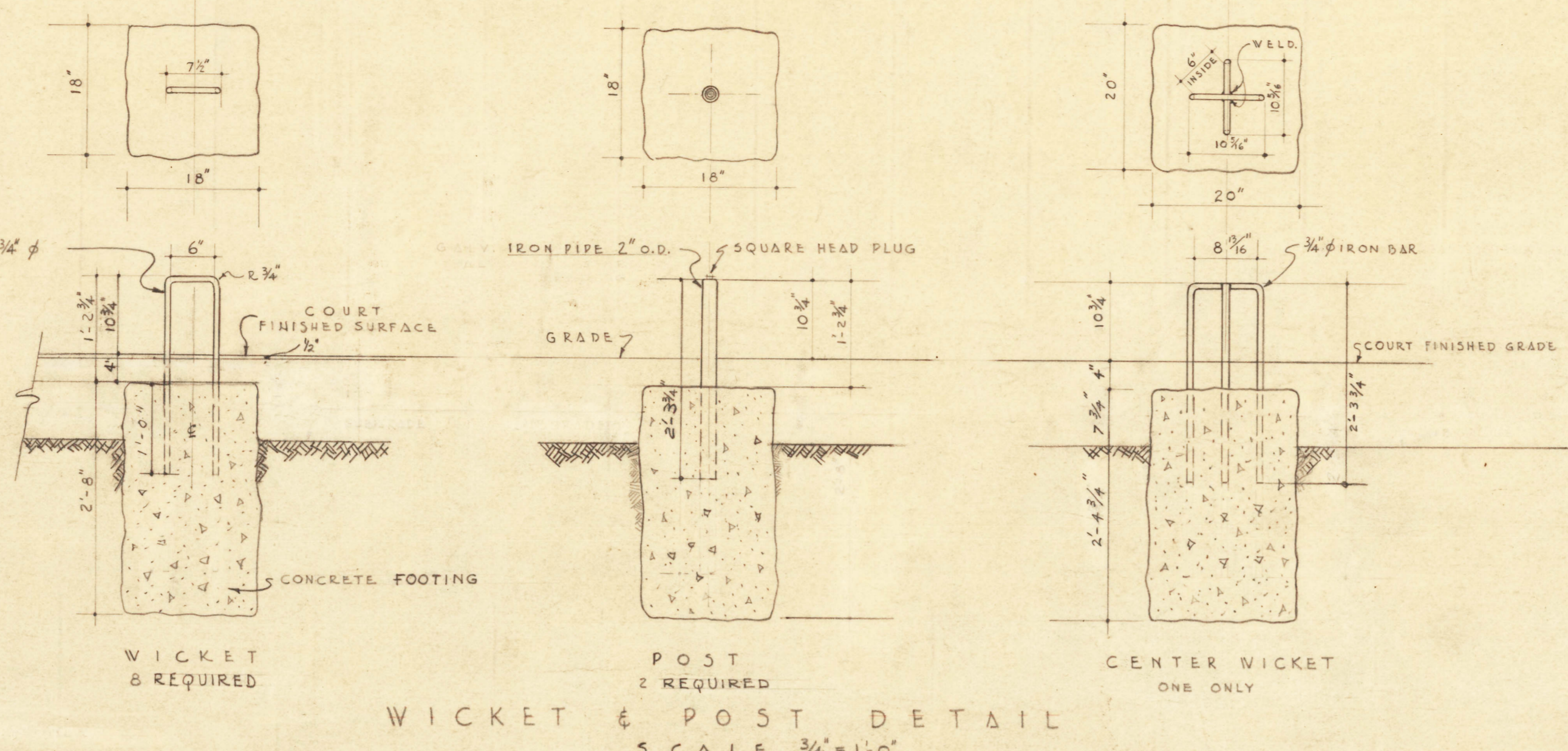


LUMBER
OAK
 (STRUCTURAL GRADE)
 4" x 6" x 18'-0" - 2 OF EACH
 4" x 8" x 18'-0" - 2 OF EACH
 4" x 12" x 18'-0" - 2 OF EACH

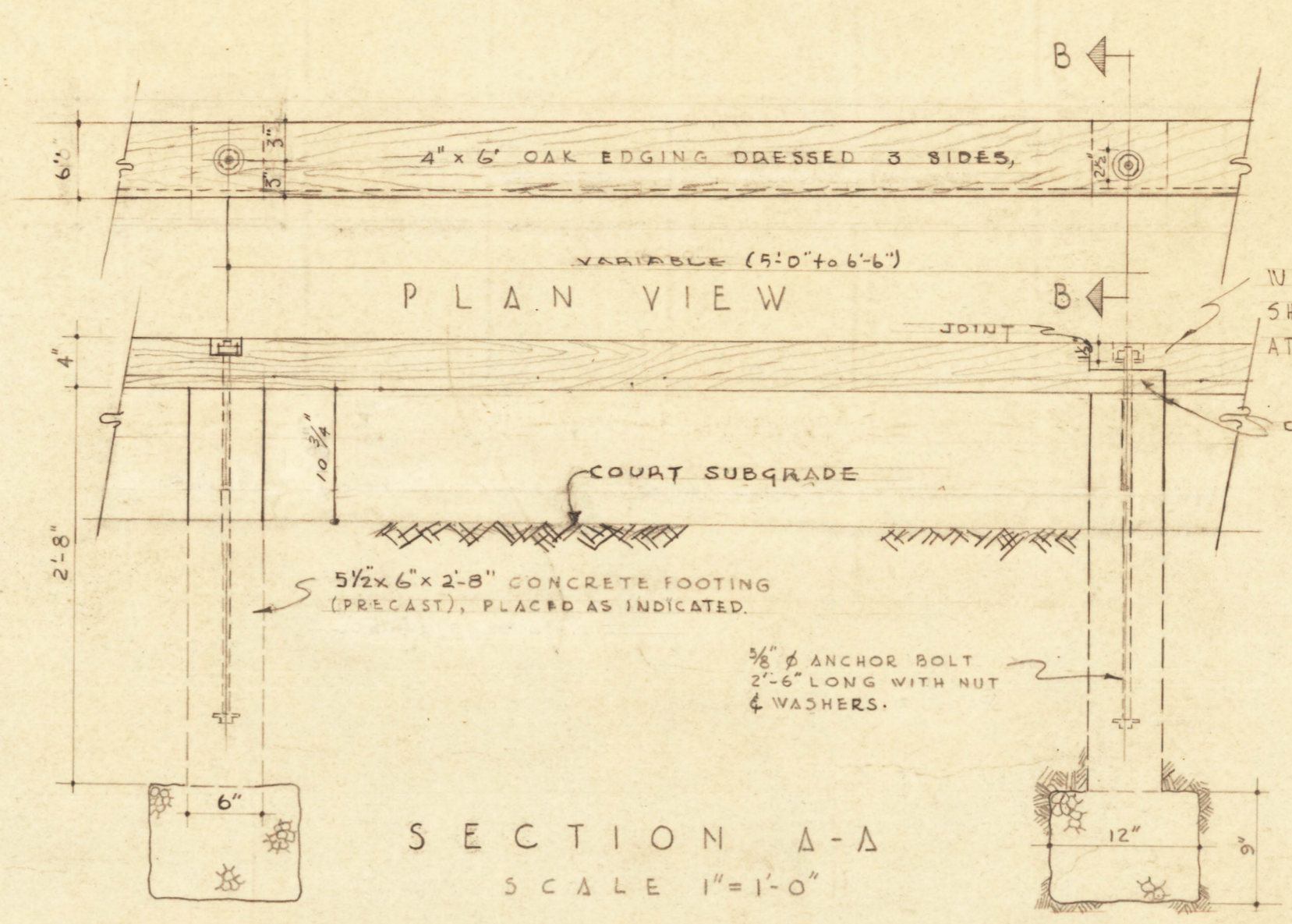
TO BE DRESSED 3 SIDES AND JOINTS FILLED WITH PUTTY

NOTE:
 ALL WOOD TO BE "PENTA-CHLOROPHENOL" OR "CREOSOTE" PRESURE TREATED, 6 LBS. PER CU. FT.

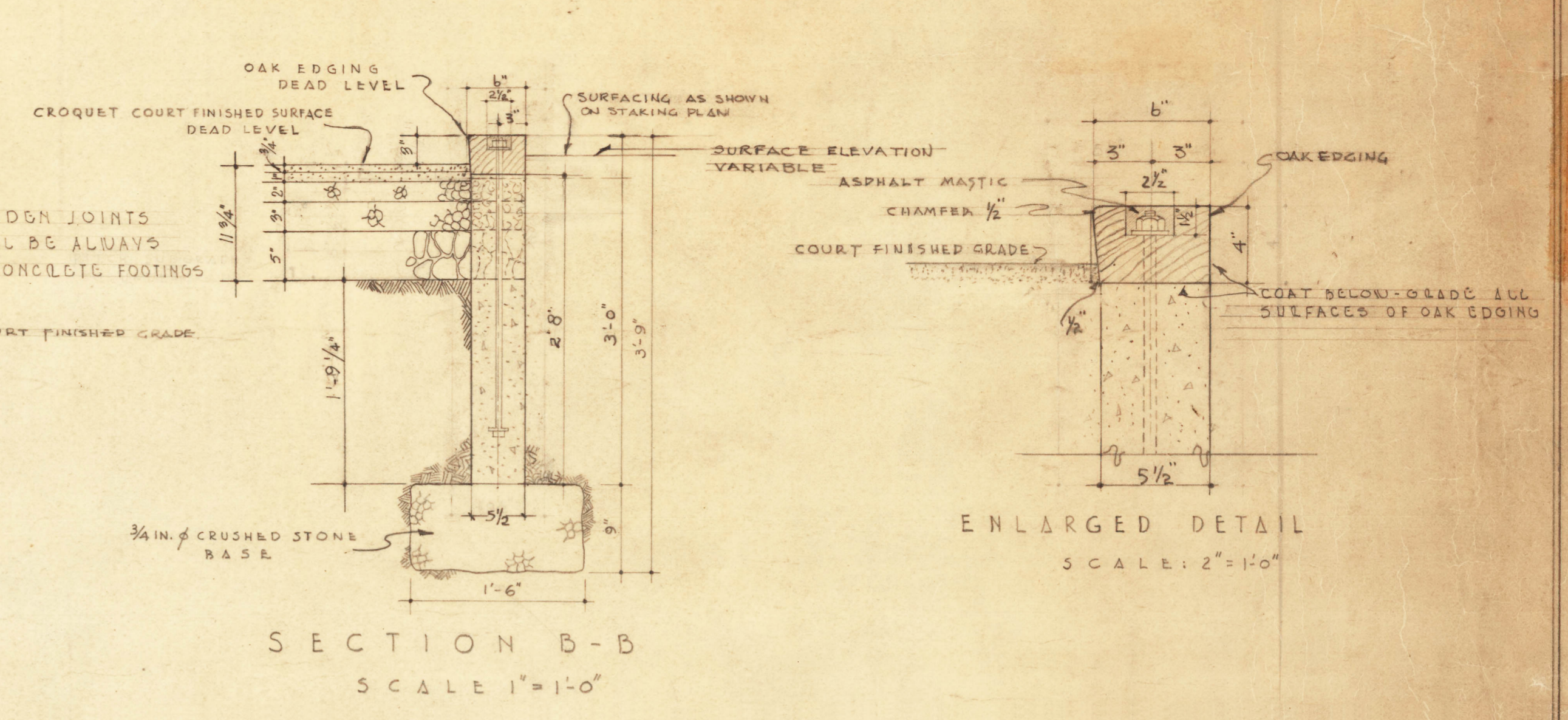
CROQUET COURT SURFACING
 3/4" SAND & CLAY - 90% CLAY - TO 1" BEACH SAND.
 1" STONE DUST WET & ROLLED
 1" CRUSHED STONE 1/2" TO 3/4" ROLLED
 3" CRUSHED STONE 1/2" ROLLED
 5" RUBBLE



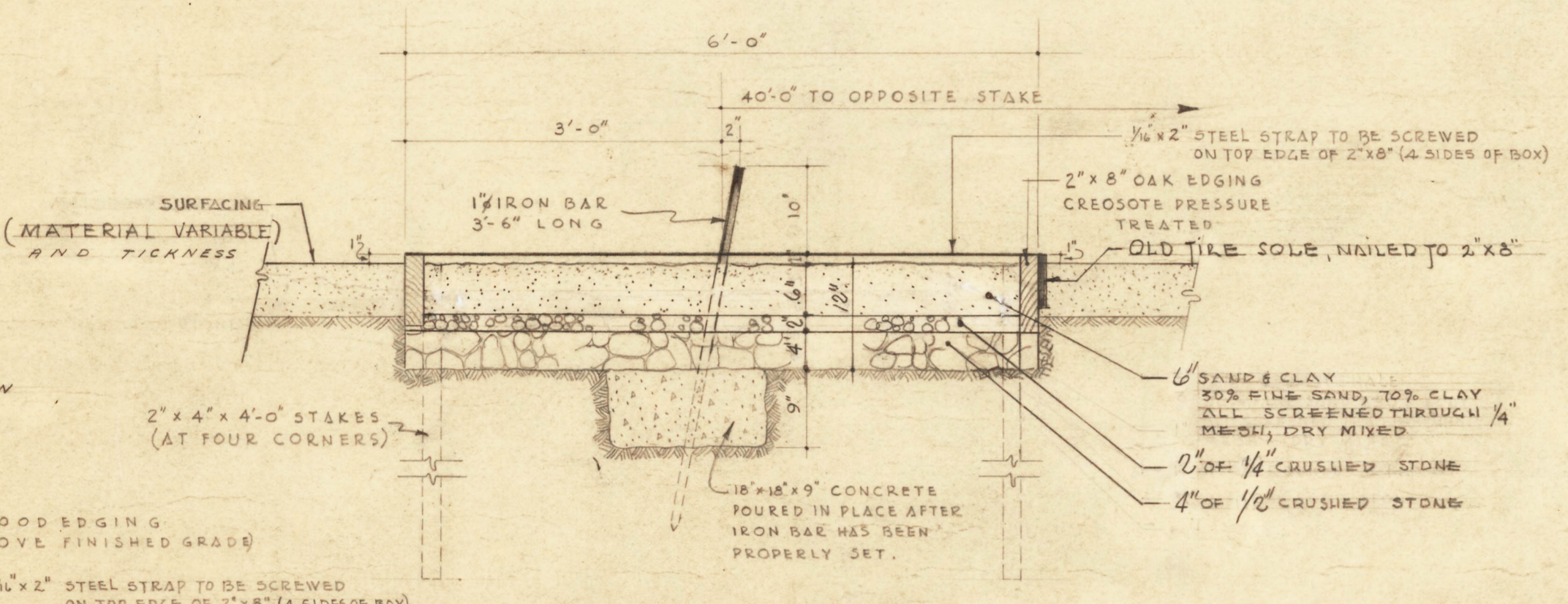
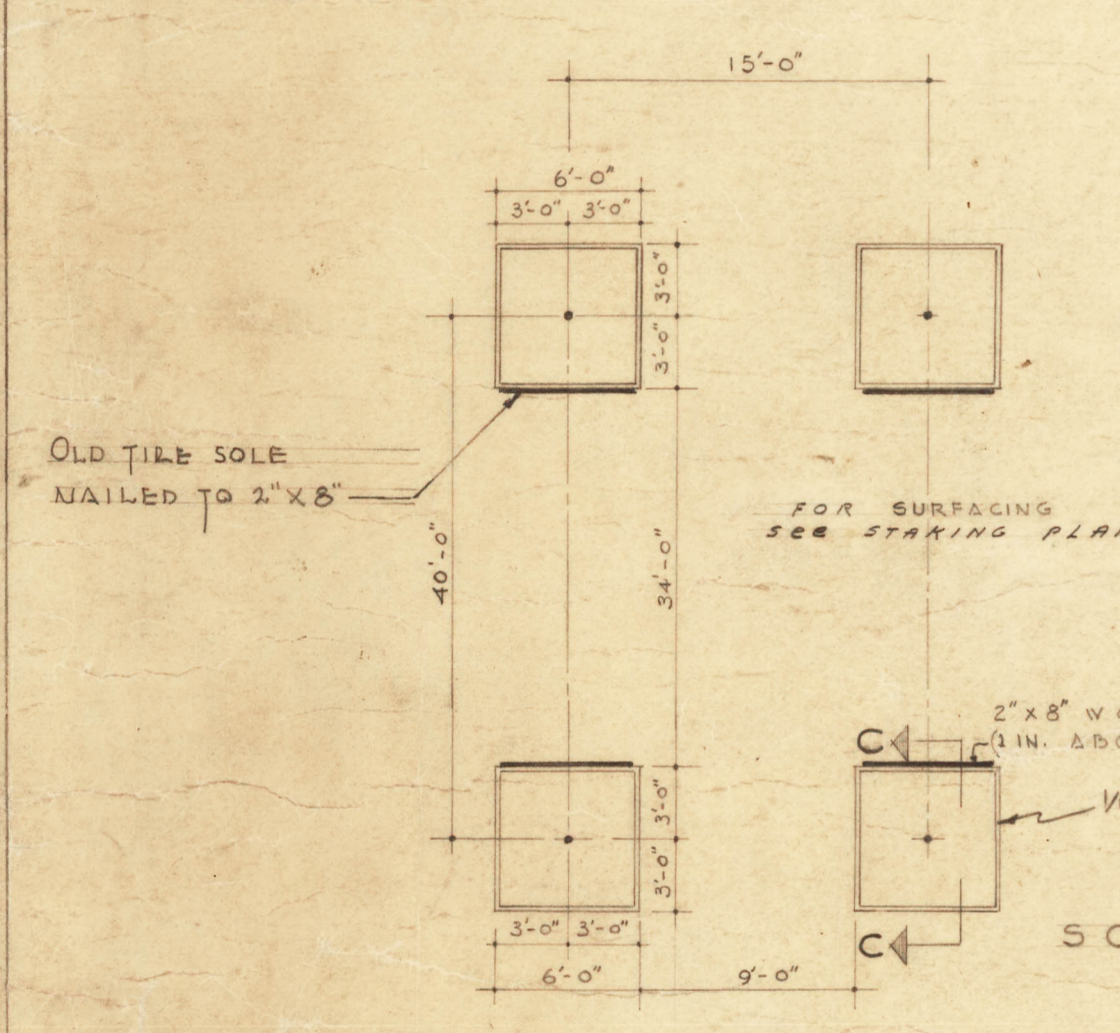
CROQUET COURT
 SCALE AS SHOWN



SECTION A-A
 SCALE 1" = 1'-0"

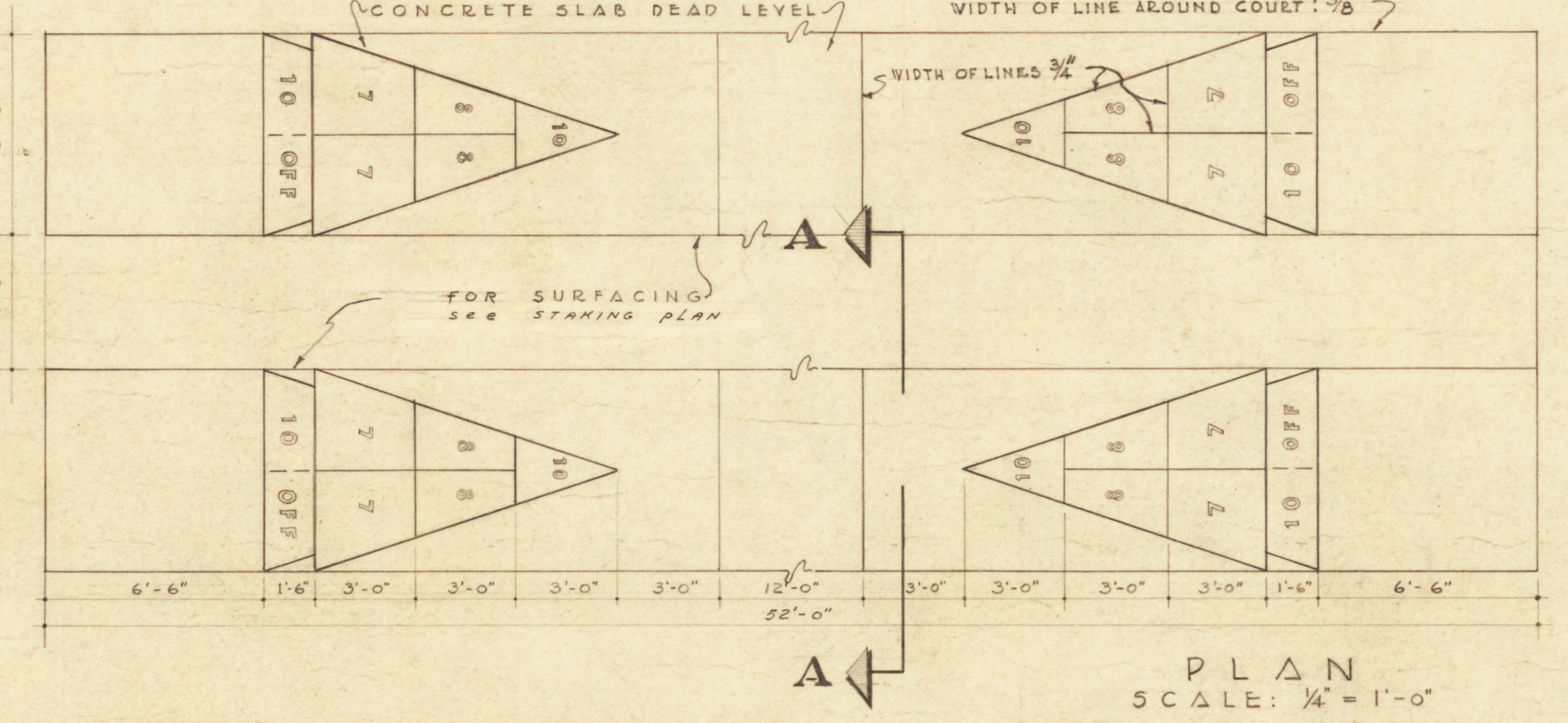


ENLARGED DETAIL
 SCALE: 2" = 1'-0"



SECTION C-C
 HORSESHOE PITCHING BOX DETAIL
 SCALE 3/4" = 1'-0"

HORSESHOE COURT
 SCALE AS SHOWN



PLAN
 SCALE: 1/4" = 1'-0"

TYPICAL SECTION OF CONCRETE SLAB
 SCALE: 1" = 1'-0"

SHUFFLEBOARD COURT
 SCALE AS SHOWN

NOTE

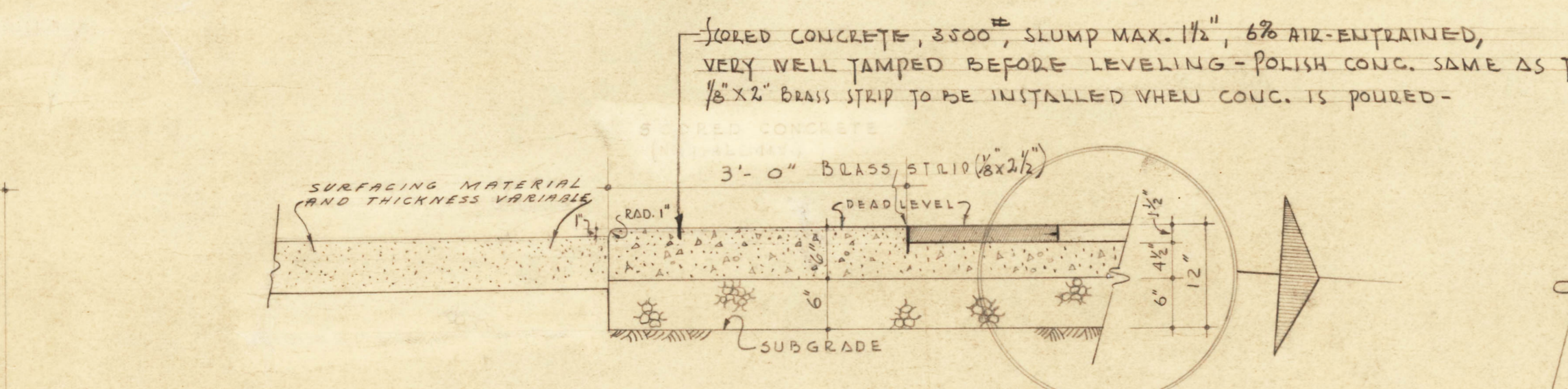
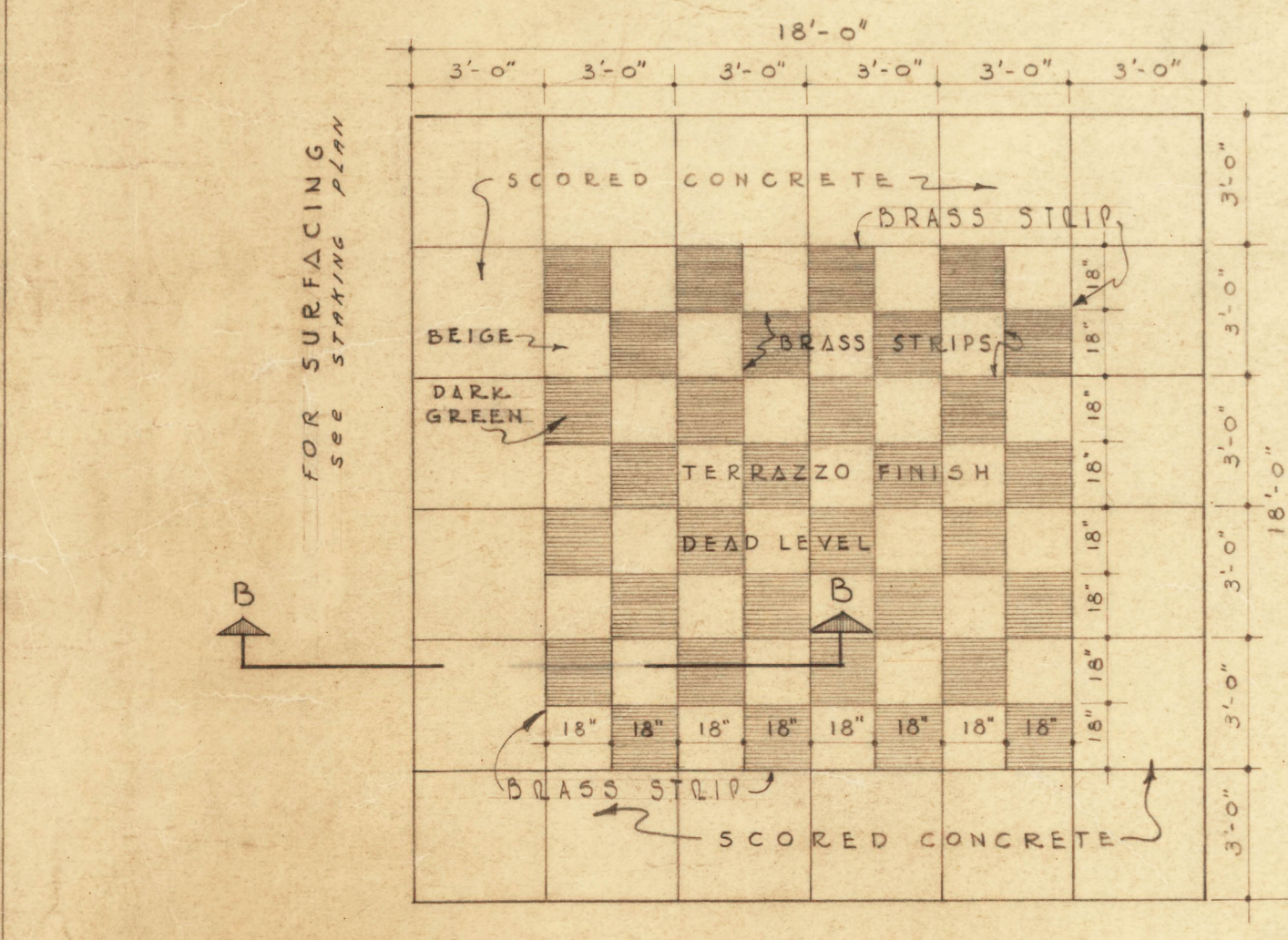
CONCRETE WORK

- 1- THE SHUFFLEBOARD WEARING SURFACE TO BE COLOURED WITH BLACK IRON OXIDE (MURKIN) SHALL BE 1/2% TO 3/4% BY WEIGHT OF PORTLAND CEMENT USED IN THE CONCRETE MIXTURE, - COMMON LAMPSLACK SHALL NOT BE USED.
- 2- THE WEARING OR PLAYING LAYER SHALL BE MIXED AND PLACED WITHIN 45 MINUTES AFTER THE BASE LAYER IS STRUCK OFF.
- 3- AFTER THE WEARING LAYER IS PLACED IT SHALL BE CAREFULLY BROUGHT TO GRADE WITH A STRAIGHT EDGE, IT SHALL THEN BE COMPACTED WITH A WOOD FLOAT AND AGAIN TESTED WITH A STRAIGHT EDGE.

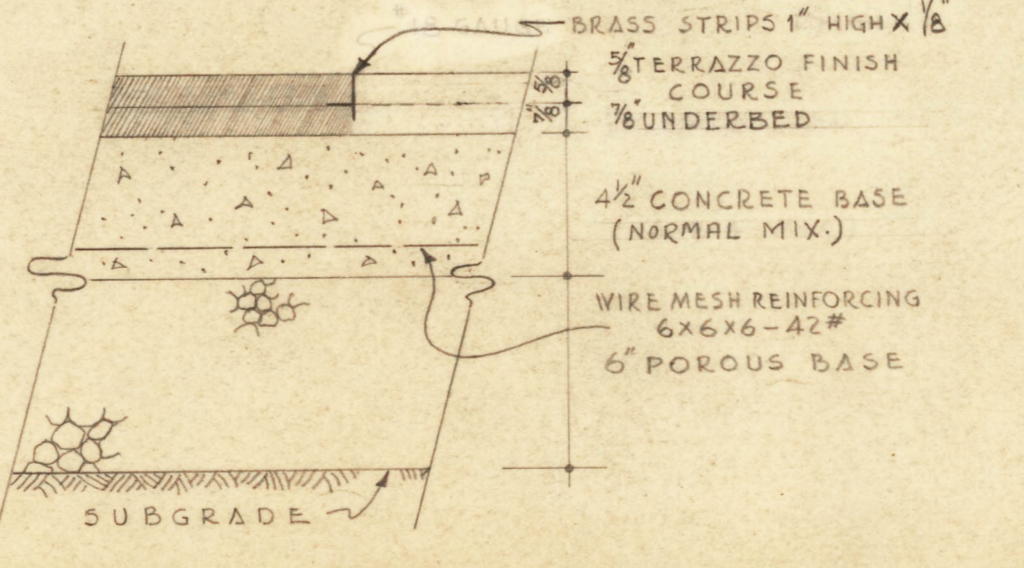
AFTER THE CONCRETE HAS FURTHER HARDENED SO THAT IT WILL WITHSTAND THE FULL WEIGHT OF THE FINISHER, IT SHALL BE CAREFULLY HAND TROWELLED UNTIL THE DESIRED SMOOTH FINISH IS ATTAINED. THE FINISHED SURFACE SHALL BE KEPT CONTINUALLY WET FOR A PERIOD OF TEN (10) DAYS BY MEANS OF COVERING THE CONCRETE WITH A 2 IN. LAYER OF CLEAN SAND OR A LAYER OF BURLAP.

MARKING THE COURTS

- 1- BEST QUALITY TYPIC PAINT SHALL BE USED ON COURTS, 4 TO 5 DAY AFTER END OF CURING.
- 2- BEFORE PAINTING OF LINES, THE CONCRETE SURFACE SHALL BE WASHED WITH A ZINC SULFATE SOLUTION, CONSISTING OF 3.0 POUNDS OF CRYSTALS PER GALLON OF WATER AT LEAST 48 HOURS SHOULD BE ALLOWED FOR THE ZINC SULFATE TREATMENT TO DRY AFTER IT HAS BEEN APPLIED.
- 3- ANY CRYSTALS THAT APPEAR ON THE SURFACE SHALL BE REMOVED BY BRUSHING BEFORE PAINTING LINES.
- 4- PAINT SHALL BE BRIGHT YELLOW LIU COLOR.
- 5- WIDTH OF LINES SHALL BE 3/4 IN. & 3/8 IN. (SEE DRAWING)

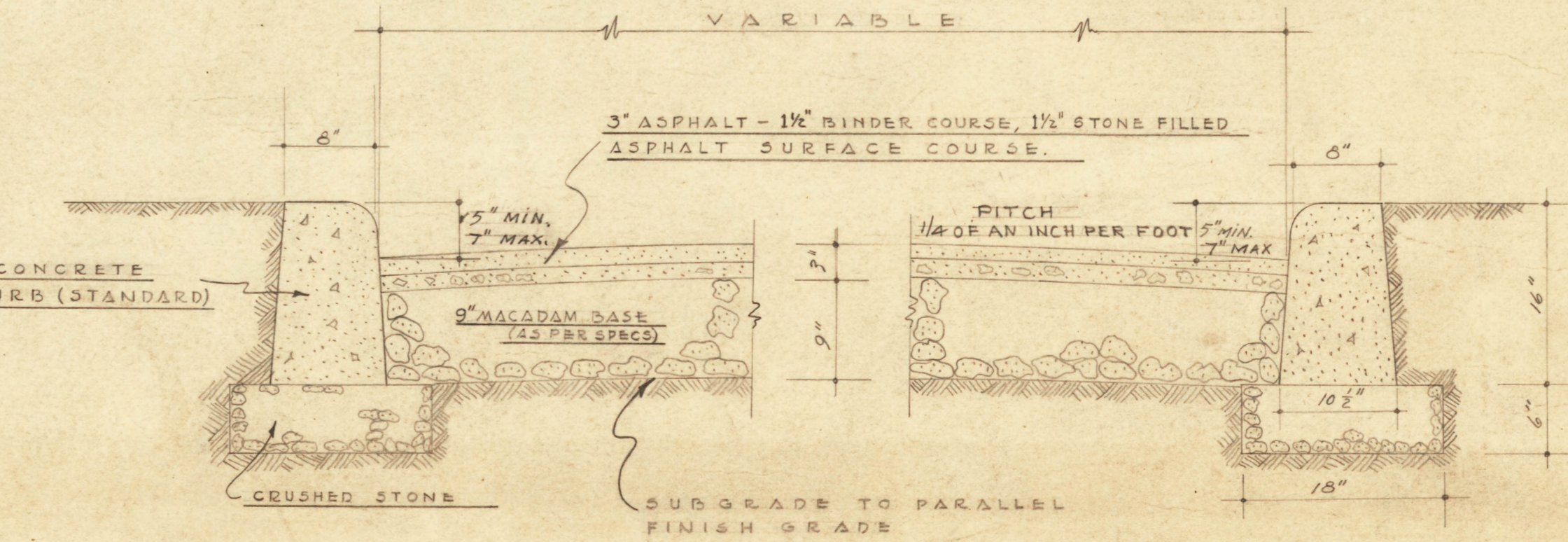


SECTION B-B
 SCALE: 3/4" = 1'-0"

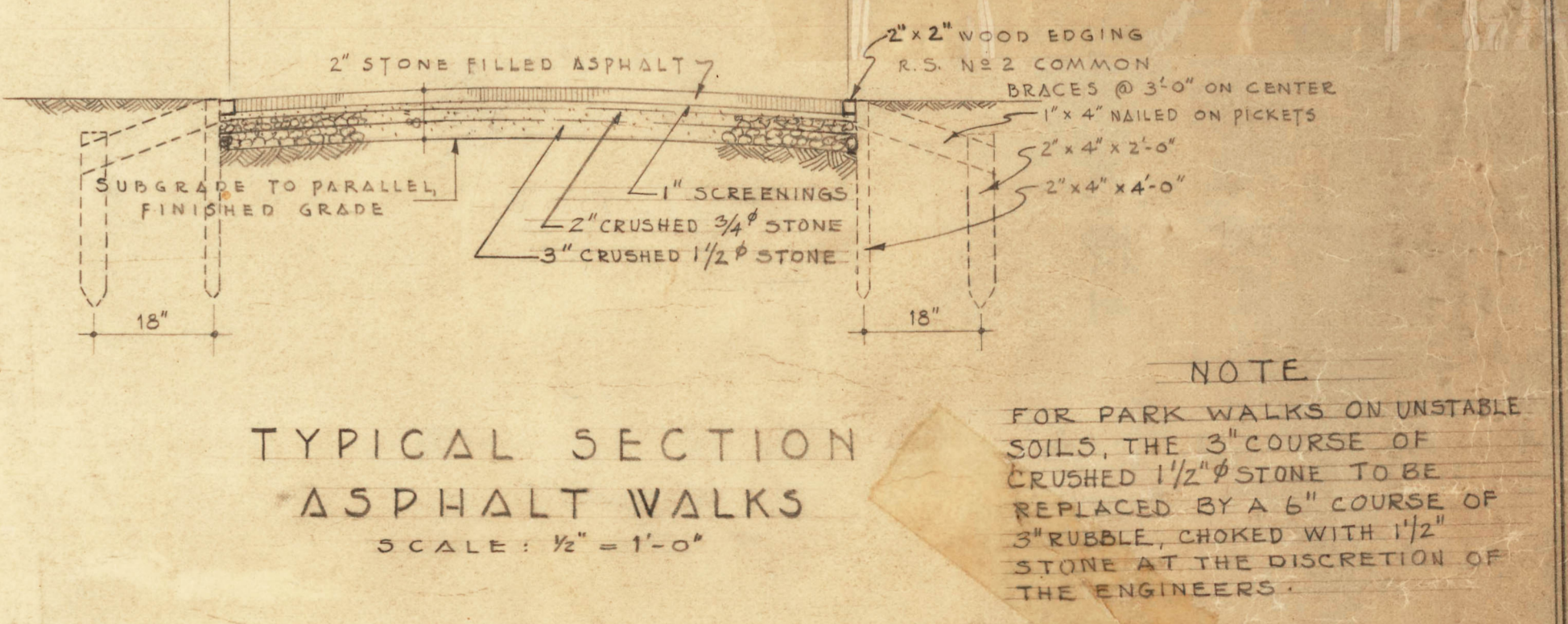


ENLARGED DETAIL
 SCALE: 2" = 1'-0"

GIANT CHECKER COURT



TYPICAL SECTION ASPHALT ROAD
 SCALE: 1" = 1'-0"



TYPICAL SECTION ASPHALT WALK
 SCALE: 1/2" = 1'-0"

NOTE

FOR PARK WALKS ON UNSTABLE SOILS, THE 3" COURSE OF CRUSHED 1/2" STONE TO BE REPLACED BY A 6" COURSE OF 3" RUBBLE, CHOKED WITH 1/2" STONE AT THE DISCRETION OF THE ENGINEERS.

REVISIONS

ITEMS	APPROV	DATE
BASE COURSE OF HORSESHOE		
WOOD EDGING & FOOTING SIZE OF CROQUET COURT, 8-21-54		
SURFACE & BASE COURSES OF CROQUET COURT, 8-21-54		
GENERAL REVISIONS 8-14-56		
WRECKING DRAWING 8-6-52		
WOOD PRES. TREAT. FOR CROQUET		
SHUFFLEBOARD COURT COLOR MARKING		

CITY OF MONTREAL
 PUBLIC WORKS DEPARTMENT
 ENGINEERING DIVISION - SECTION OF PARKS & RECREATION

STANDARD
GAMES & PAVEMENTS
FOR PARKS

PREPARED BY E. GAGNON SCALE AS SHOWN
 DRAWN BY MARCEL FORTIN DATE APRIL 24, 1956
 CHECKED BY E. MATTE REVISIONS
 STD. No. 100

Om. Borden
 ENGINEER SUPERINTENDING

L.P. Allen
 DIRECTOR

3/4"
 1/2"